



Sailing Shed Procedures

2010 Weekly sessions:

Tuesday & Thursday

1545 – 1715

Saturday

0900 – 1200

BBQ (\$5)



Requirements:

- TSS Sailing uniform – shirt, shorts, hat, sailing boots, sunglasses (optional) and sun cream (TSS Sailing rash tops are available at the school shop).
- Note: Life jackets will be allocated each session in Term 1. If students decide to continue with sailing they must purchase their own jackets
- Yachting Australia logbook
- “Get into Small Boat Sailing” text
- Folder/paper/pen (for all sessions)

Attendance:

- As with all sports at TSS you are expected to attend all sessions. If you miss a session you will miss learning valuable skills and potentially hold up your group.
- Please be on time to enable the instructors to allocate boats.

On Arrival:

- STORE your personal equipment e.g. school bags against the fence under the flagpole. If it looks like rain, your instructors will advise you to use the “designated area in shed” for storage. Let’s keep classroom clear from briefings.
- Change into sailing uniform QUICKLY. This includes shoes, life jacket, hat and sunburn cream.
- Your instructor will have a roll – let them know you have arrived.
- Look at the local conditions e.g. wind direction, tide.
- When you have been allocated a boat, check it carefully to ensure it is in working condition. Move the boat outside onto grass area north of ramp to rig. Please leave the ramp free of boats to make launching of rigged boats more efficient.
- If winds are strong, don’t rig the sails until the last moment or until the boat has been launched to avoid unnecessary wear and tear.
- Help your instructors launch the safety boats and equipment e.g. buoys.
- Your instructor will hold a briefing to let you know the plans for the session. Listen carefully and ask questions to make sure you understand.
- Don’t forget to SIGN ON stating your full name and your boat number. Write NEATLY please!

On the Water:

- When instructed, launch your boats. Remember to work together helping each other. This is particularly important when sailing solo.
- Store your trailers off the edge of the ramp area leaving plenty of room for other boats.
- Stay with your group. Keep in contact with your instructor. Never leave the group without your instructor’s permission.



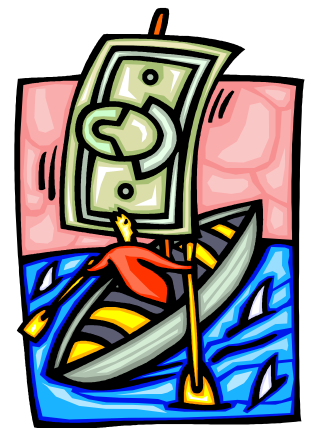
Returning to Shore:

- When instructed, return to shore promptly. Ensure you approach shore up wind and under control! Ensure the centre board and rudder are both up before entering shallow water.
- Again, remember to work together helping each other with trailers and boats. This is particularly important when sailing solo.
- Help your instructors pull the safety boats off the water. You may have to pause in your own de-rigging, in order to help someone else. That's OK., it's what you should do.
- Once you have re-rigged and stored your boats, your instructor will hold a short de-briefing discussion. At this point you must SIGN OFF. Do not leave until your instructor gives permission!
- Report any boat damage / problems to your instructor.
- On Saturdays, the BBQ commences when your instructor has dismissed your whole group.



Hazards: The Environment: The entire shed area is potentially hazardous, so be aware, look about you, don't touch tools without permission. Always obey instructions promptly.
No bare feet!

The ramp is very dangerous due to oysters and algal growth making it extremely slippery, especially at low tide. So, move cautiously, with others helping, when you launch and retrieve your boat. Always wear protective footwear. Always lift trailers & boats with a straight back!



The river is a major hazard. Always keep a proper lookout for other boats...

- Avoid collision at all costs, regardless who has "right of way"!
 - Stay out of the shipping channel on the far side of the river... be respectful of other boats, especially big, power vessels!
 - Stay out of the rowers' area whenever they are on the water.... they stay south, we stay north, unless otherwise advised!
 - Do not "play around" in the boats on the water. Playing "pirates", or other such games, lead to damaged gear and potential injury... be respectful of all equipment!
 - Only capsize if instructed to do so, or when it is unavoidable due to strong winds (and possibly poor technique!)
- Know your "man overboard" drill, so that each person on board can take control in an emergency.
 - Be aware of sails, ropes and boat parts when capsized... communicate with your partner, so that both of you stay safe.

Sailing is fun and we want you to enjoy every minute of your time in the shed, so please do the right thing, lend a hand each and every day, share the workload, so that we can all enjoy!